

TORNADO

Model
CJ-800T



Thanks for Choosing Tornado
Juicer

ELARABY

24/7 19319 www.elarabygroup.com
Tornado Elaraby

This appliance is intended to be used in household and similar applications such as:

- staff kitchen areas in shops, offices and other working environments.
- farm houses.
- by clients in hotels, motels and other residential type environments.
- bed and breakfast type environments. out of reach of children.

Important Safeguards

This Product Was Designed And Manufactured To Meet Strict Quality And Safety Standards. There Are, However, Some Operational Precautions That You Should Be Aware Of.

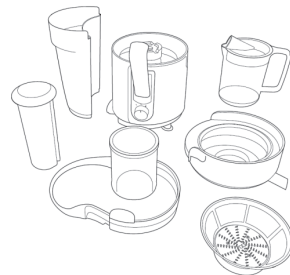
1. Read all warnings & instructions in this manual to ensure you get the best out of your product.
2. For household use only. Only use this appliance for its intended purpose as described in this manual. This appliance is only suitable for domestic use and is not designed for commercial use.
3. Before connecting the juicer to the power, check the voltage shown on the appliance corresponds with the voltage for the mains supply of the country you are in. If it doesn't, contact your local store.
4. Please don't dismantle. If a fault occurs, have the juicer inspected in a qualified repair shop or return to us at ASDA.
5. Remove all packaging prior to use. Inspect the product for any damage before use. If damage is found, notify ASDA to exchange the product.
6. If the supply cord is damaged, it must be replaced by the manufacturer, its service agent or similarly qualified persons in order to avoid hazard.
7. This appliance shall not be used by children. Keep the appliance and its cord out of reach of children.
8. This appliance can be used by persons with reduced physical, sensory or mental capabilities or lack of experience and knowledge if they have been given supervision or instruction concerning use of the appliance in a safe way and if they understand the hazards involved.
9. Children shall not play with the appliance.
11. Always disconnect the appliance from the supply if it is left unattended and before assembling, disassembling or cleaning.
12. Switch off the appliance and disconnect from supply before changing accessories or approaching parts that move in use.
13. Do not use the appliance if the rotating sieve is damaged.
14. Do not operate when the rotating sieve is empty, as this can cause damage.
15. Do not touch any internal parts when in use or before the Juicer has come to a complete stop.
16. Care is needed when handling sharp cutting blades, emptying the bowl and during cleaning.
17. Keep fingers, hair, clothing and utensils away from all moving parts, the spout and funnel of the juicer.
18. Do not immerse the electrical parts of the appliance in water or other liquids. Never hold the appliance under running water. Do not use with wet hands.
19. Keep away from harsh or abrasive cleaning agents or solvents.
20. Never leave unattended when in use.
21. Never use fingers or utensils to push food in, only use the supplied plunger.

Important Safeguards

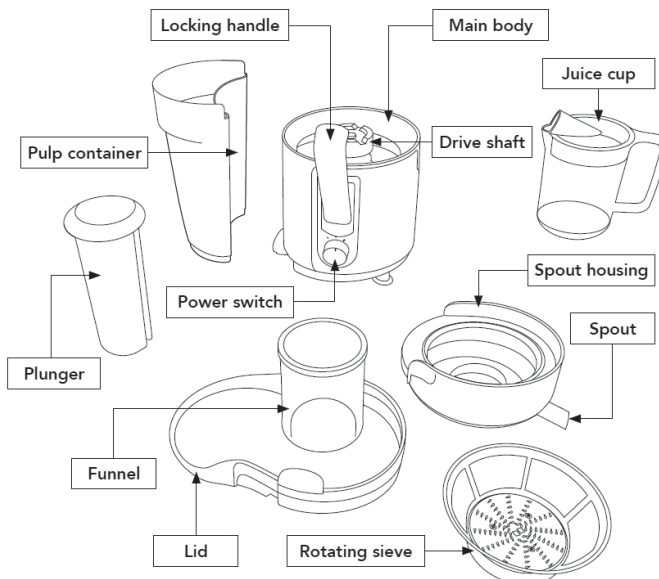
22. Place on a firm, level surface.
23. The cord shouldn't hang over the edge of a table or counter, or touch a hot surface.
24. Do not place on or near hot gas or electric burners, ovens, or other heat sources.
25. Never use accessories that are not recommended by the manufacturer. They could pose a safety risk to the user and might damage the appliance. Only use original parts and accessories.
26. Environmental information: If at anytime in the future you should need to dispose of this product, please note that, in the UK, waste electrical products/batteries should not be disposed of with household waste.

You should have

Main body, rotating sieve, spout housing, lid, pulp container, plunger & juice cup



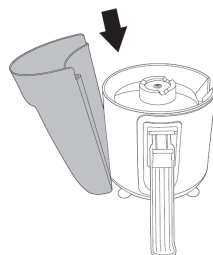
How to... know the parts



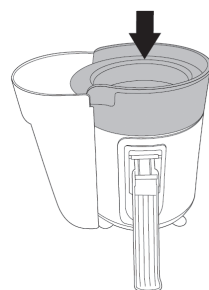
How to... assemble your juicer

Before assembling, remove all packaging and wash all parts except for the main body in warm, soapy water and dry thoroughly. Wipe the main body with a damp cloth. Do not plug into the mains power whilst assembling.

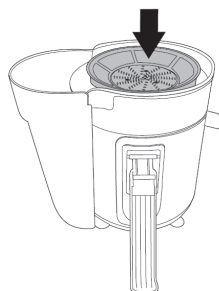
1. Align the pulp container with the lug at the bottom of the main body. Rest the pulp container up against the main body.



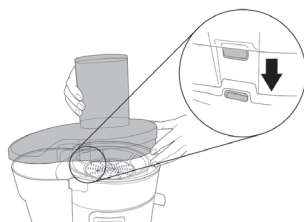
2. Place the spout housing onto the main body. Ensure the lip of the spout housing hooks over the pulp container as this holds the container in place.



3. Grip the sides of the rotating sieve and slot it onto the drive shaft on top of the main body. Once they are aligned, push down on the rotating sieve until it locks in place with <clunk>. NOTE: You may need to rotate the sieve a little to align it with the drive shaft in the main body.

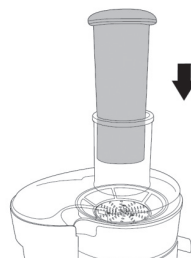


4. Align the lid with the top of the spout housing and pulp container assembly. Make sure the tabs on the lid align with the tabs on the spout housing.



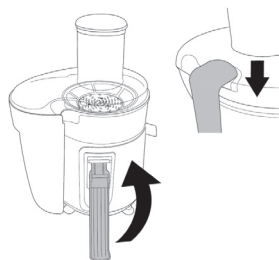
How to... assemble your juicer

5. Slot the plunger into the funnel in the top of the lid.



6. Slot the plunger into the funnel in the top of the lid.

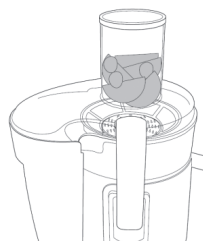
Your juicer is now ready to use.



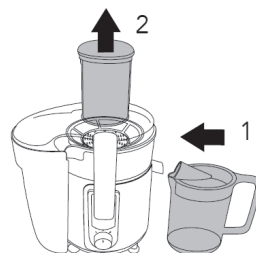
How to... use your juicer

1. Place the juicer unit on a flat, level surface.
Ensure the power switch is facing you and set to 0.

2. Put the plug into a nearby power socket and switch on.



3. Place the juice cup under the spout (1) and remove the plunger (2).



How to... clean your juicer

4. Prepare the fruit and vegetables.

NOTE: Always wash fruit and vegetables before juicing. Remove large seeds, pips or peel (if these are not removed they may damage and block the rotating sieve).

Thick pith should also be removed for the best taste. Cut larger fruit and vegetables into smaller pieces so they can easily fit into the funnel.

5. Put a small amount of the fruit or vegetables into the funnel. Place the plunger back into the funnel and gently press down. Pressing down on the plunger too hard may reduce the amount of juice you get from your fruit or vegetables.

6. Turn the power switch to the desired power setting.

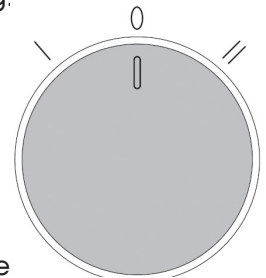
0: OFF setting

I: For soft and juicy fruits and vegetables

II: For harder fruits and vegetables

Once the fruit or vegetables have been juiced, turn the power switch to the 0 setting. Remove the plunger and insert more fruit or vegetables and continue to juice until all of the fruit and vegetables have been used.

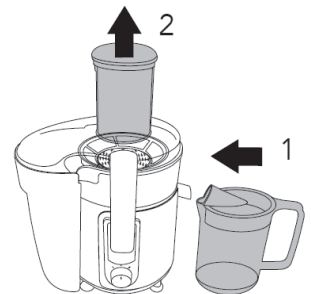
NOTE: Keep a close eye on the jug and pulp container as they will quickly fill up.



7. To empty the pulp container, ensure the power switch is set to '0' and the power is off at the mains switch.

Unlock the locking handles (1) remove the lid (2) and carefully lift away the pulp container (3).

Empty the container, preferably into your Food waste bin or home composting bin.



Hints & Tips

1. Always replace the plunger before turning the juicer on to prevent Splashing.
2. If you're juicing a lot of fruit or vegetables, you'll need to clean the rotating sieve regularly so it doesn't become blocked.
3. Always use fresh fruit and vegetables as these contain the largest amount of juice.
4. Harder and more fibrous fruits and vegetables (e.g. banana, mango and avocado) are not suitable for juicing.
5. You can juice leafy vegetables (e.g. cabbage and spinach) by rolling the leaves up so they fit into the funnel.
6. The best fruits and vegetables to use are orange, grapefruit, lemon, lime, apple, melon, pineapple, tomato, cucumber and carrot.
7. For best taste, drink juice as soon as it's made.
8. Fresh apple juice may turn brown when it comes into contact with air. Though this is perfectly natural, it can be reduced by adding in lemon Juice.
9. Pulp produced after juicing can be used in cake and muffin recipes.
10. Juice can be easily thinned down by adding sparkling or still water.
11. Never store the juicer when it's dirty or wet.

How to... clean your juicer

1. Ensure the juicer is switched off and is unplugged from the mains supply. Dismantle all the parts. Simply reverse the steps when you assembled the juicer as described in the 'How to...assemble your juicer' section of the manual. Take care when removing the rotating sieve as it has sharp blades.
2. Wipe the main body with a damp cloth and mild detergent if needed. Dry thoroughly. Never immerse in water.
3. Wash the rotating sieve, lid, pulp container, spout housing, plunger and juice cup in warm soapy water. These can also be placed in the dishwasher, though this may cause the finish to dull over time.
4. When washing the rotating sieve, take care as it has very sharp cutters at the bottom.
5. You may find it's best to use a small brush (e.g. a nail brush) to clean the rotating sieve, to get all the food out of the cutting edges.
6. Please remember not to use harsh or abrasive cleaning agents, or scourers.
7. Ensure all items are dry and the motor housing is cool before storing in a clean, dry place, out of reach of children.

Environment friendly disposal

You can help protect the environment!
Please remember to respect the local regulations:
hand in the non-working electrical equipments to an
appropriate waste disposal center.



ELARABY



19319



www.elarabygroup.com

Tornado Elaraby